

CERTIFIED LAND CORNER RECORDATION

DESCRIPTION OF CORNER EVIDENCE FOUND, AND ORIGINAL RECORD (If known)

G.L.O. Record-Granite Boulder 14" X 8" X 6",
Set in 1870

Corner Re-Established by Single Proportionate Measurement

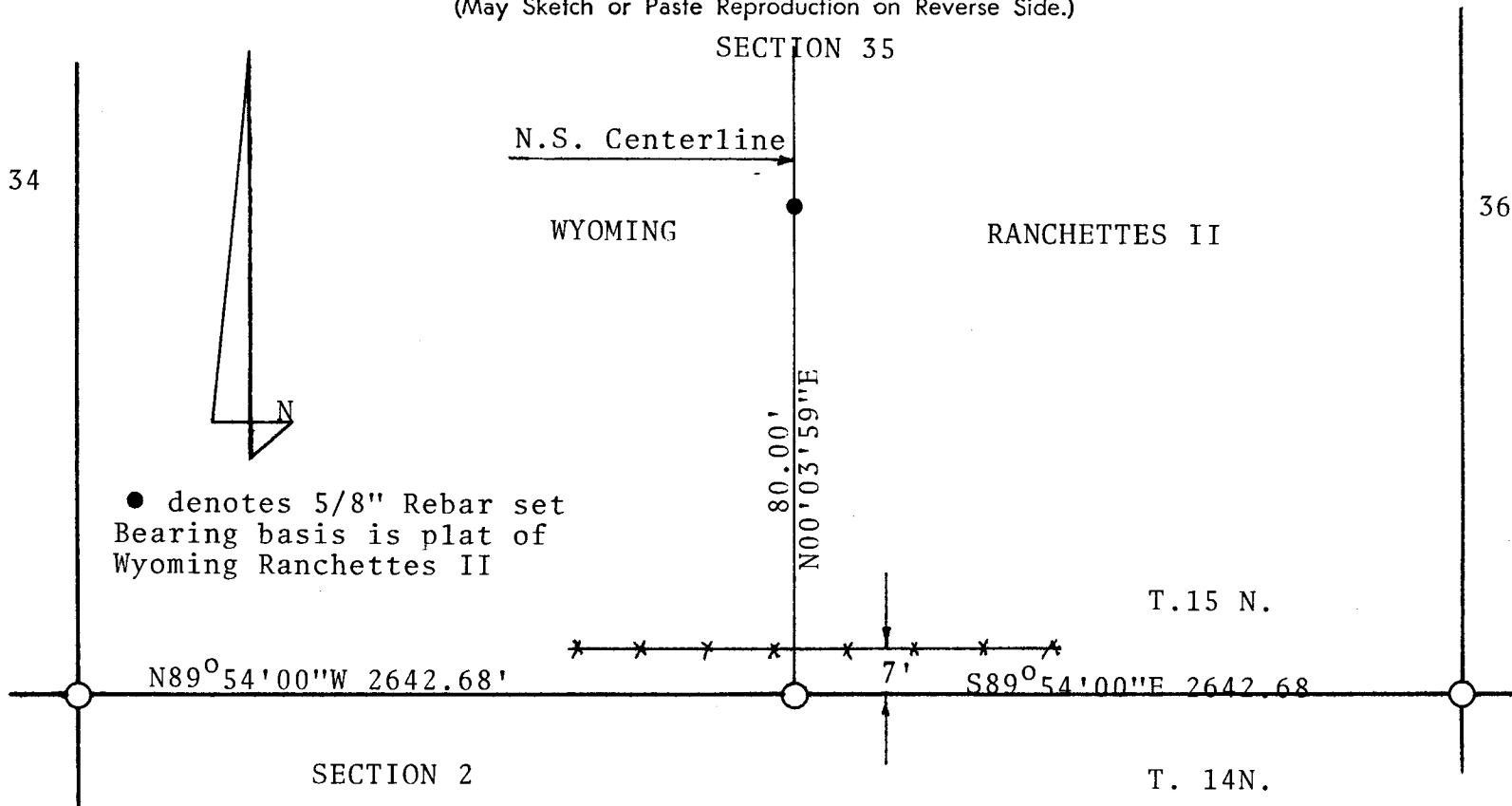
Found-Notched stone, Fitting G.L.O. Record
Description, is loose and has been moved

DESCRIPTION OF MONUMENT AND ACCESSORIES ESTABLISHED
TO PERPETUATE THE ORIGINAL LOCATION OF THIS CORNER:

$\frac{1}{4}$
35 T.15N.
2 T.14N.
R.66W., 6th P.M.

At the Corner Set a 2" dia. X 30" long iron pipe with Brass Cap
Accessories Raised rock mound around monument

SKETCH, WITH COURSE AND DISTANCE TO ADJACENT CORNER IF DETERMINED IN THIS SURVEY.
(May Sketch or Paste Reproduction on Reverse Side.)



I, William Condrey certify that I have carefully performed or reviewed the work done on the diagrammed corner as reported on this recordation form and approve the same.

William Condrey Wyoming L.S. #577
Signature of Surveyor Registration No.

STATE OF WYOMING,
Office of Clerk and Recorder,
County of Saramie

This "corner record" was filed for record on the 20 day of October, 1976, was noted on the cross-index plat and is assigned page No. _____, in book No. _____.

Janet C. Whitehead
County Official

Cross Index No.	<u>A19</u>	T. <u>14</u>	R. <u>66</u>	Mer.
	<u>Z19</u>	T. <u>15</u>	R. <u>66</u>	Mer.
		T. _____	R. _____	Mer.
		T. _____	R. _____	Mer.
		T. _____	R. _____	Mer.
		T. _____	R. _____	Mer.
		T. _____	R. _____	Mer.

The State of Wyoming }
County of Laramie } SS

This instrument was filed for record
at 1153 o'clock A M. on the
20 day of Oct
A. D. 19 76 and duly recorded in
book _____ on page _____

James C. McEwen

County Clerk & Ex-Officio Register at Deeds
By _____ Deputy